

GTR058 Power Issue

The motor is not getting power. The LCD display is not on. The gate arms will not operate.

Possible Causes

1. Incorrect Mains Power Connection
2. PC Board Wiring Connections (Refer fig 1)
3. Damaged Fuse (Refer fig 2)
4. Damaged Control Board

Step-by-Step Troubleshooting

***If you are uncomfortable or unsure about performing any of these tests please contact Richmond Wheel & Castor for further support.**

1. Check your power cable for correct connection or any physical damage.
 - If your cord is damaged do NOT use the motor. Contact Richmond Wheel & Castor
 - Check that power was switched on and plug was correctly connected.
 - Disconnect the power again before continuing with any further steps.
2. Check the PC control board for loose or disconnected wiring. Please see images below
 - Fuse box circled below

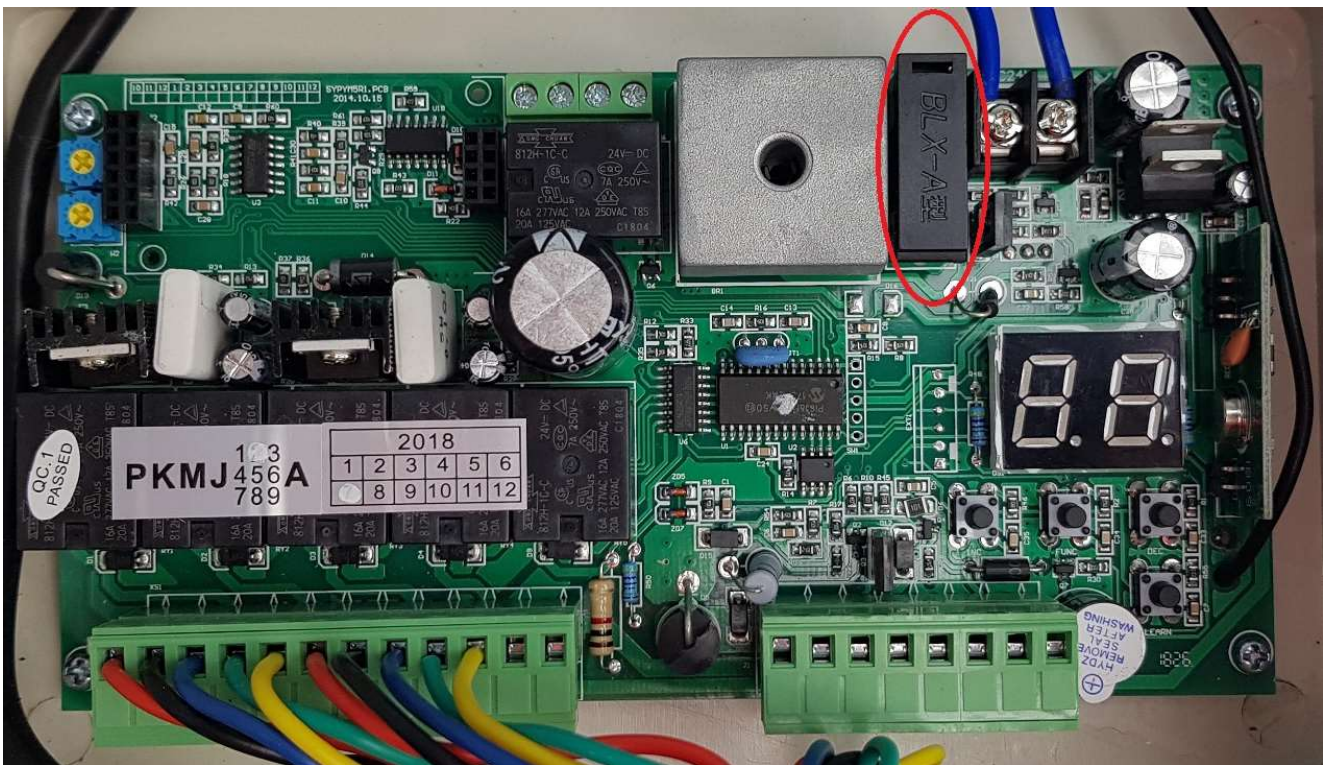


Fig 1

3. Open the fuse box and check the fuse for damage.
 - Damaged fuse shown below
 - Replace the fuse if damaged
 - Fuse type: F10AL250V or F10L250V



Fig 2

4. Check the PC Control Board for any obvious signs of physical damage.
 - Damage can include scorch marks, corrosion etc.

If your issue remains, please contact Richmond Wheel & Castor for further technical support